

Advent Health
SPORTS PARK
at **BLUHAWK**

**EMERGENCY
ACTION PLAN**



TABLE OF CONTENTS

PURPOSE OF THE EMERGENCY ACTION PLAN

Facility Description

Emergency Phone Numbers

Utility Phone Numbers

TRAINING

Emergency Location

Access Roles

Responsibilities

Rescue

Medical Assistance

Drills

EVACUATION ROUTES

EVACUATION FLOOR MAPS

LOCATIONS OF FIRE ALARMS & FIRE EXTINGUISHERS REPORTING

EMERGENCIES

EVACUATION PROCEDURES

EVACUATION

EMERGENCY TYPES

Medical Emergency

Fire Procedures

Active Shooter

Missing Child

Severe Weather

Extended Power Loss

Shelter In Place C Lock Down

ACCOUNTING FOR BUILDING OCCUPANTS' APPENDIX

PURPOSE OF THE EMERGENCY ACTION PLAN

This Emergency Action Plan (EAP) is a way for AdventHealth Sports Park at Bluhawk to prepare and plan for a variety of emergency situations.

The purpose of the emergency plan is to provide guidance for addressing emergencies which may occur at the facility.

FACILITY DESCRIPTION

Facility Name: AdventHealth Sports Park at Bluhawk
Facility Address: 16201 Shawnee Dr., Overland Park, KS | Phone Number: 913-713-4295

EMERGENCY PHONE NUMBERS

Overland Park Fire Station 45 Phone: 913-888-6066
Overland Park Police Department: 913-895-6300

UTILITY PHONE NUMBERS

Evergy
Account Number: 0603015345
Phone Number: 888-544-4852
Kansas Gas Company
Account Number: 512379553 2054882 82 / 512286898 2062866 36
Phone Number: 888-482-4950

TRAINING

It is the supervisor's responsibility to familiarize their team members with this EAP.

The AdventHealth Sports Park at Bluhawk should advise each team member of his/her responsibilities and conduct training in accordance with the requirements for their level of involvement.

EAP Location and Access

A copy of this EAP shall be available to all team members through their supervisor.
A printed- hard copy of the building's EAP shall be kept at the Bluhawk Welcome Desk.

ROLES RESPONSIBILITIES

The General Manager (GM) is the initial person in charge of the site until relieved by first responders. The Facilities Manager is second in command and responsible for:

- Planning and executing evacuation drills and shelter-in-place training events Conducting monthly reviews of the EAP plan and providing updates if necessary
- Ensure all contact information, emergency evacuation maps, team member rosters, and building inspections are up to date

RESCUE MEDICAL ASSISTANCE

Team members may provide medical assistance to others in accordance with their training until first responders arrive.

DRILLS

The facility performs at least one emergency exercise (drill) each calendar year that meets the following requirements:

- The evacuation drill will include all team members, contractors, and visitors an assessment of the emergency plan
- The General Manager and/or Facilities Manager is responsible for ensuring that emergency exercises or drills are carried out as recommended, and that performance or effectiveness is documented.

EVACUATION ROUTES

Evacuation route maps have been posted in each work area. The following information is marked on evacuation maps:

- Fire Extinguishers
- Hot Water Control
- First Aids
- AEDs
- Fire Alarm Pull Stations
- Gas Control
- Tornado
- Shelter
- Electric Control
- Emergency Exits
- Primary and Secondary Evacuation Routes
- Designated Assembly Area

EVACUATION FLOOR MAPS

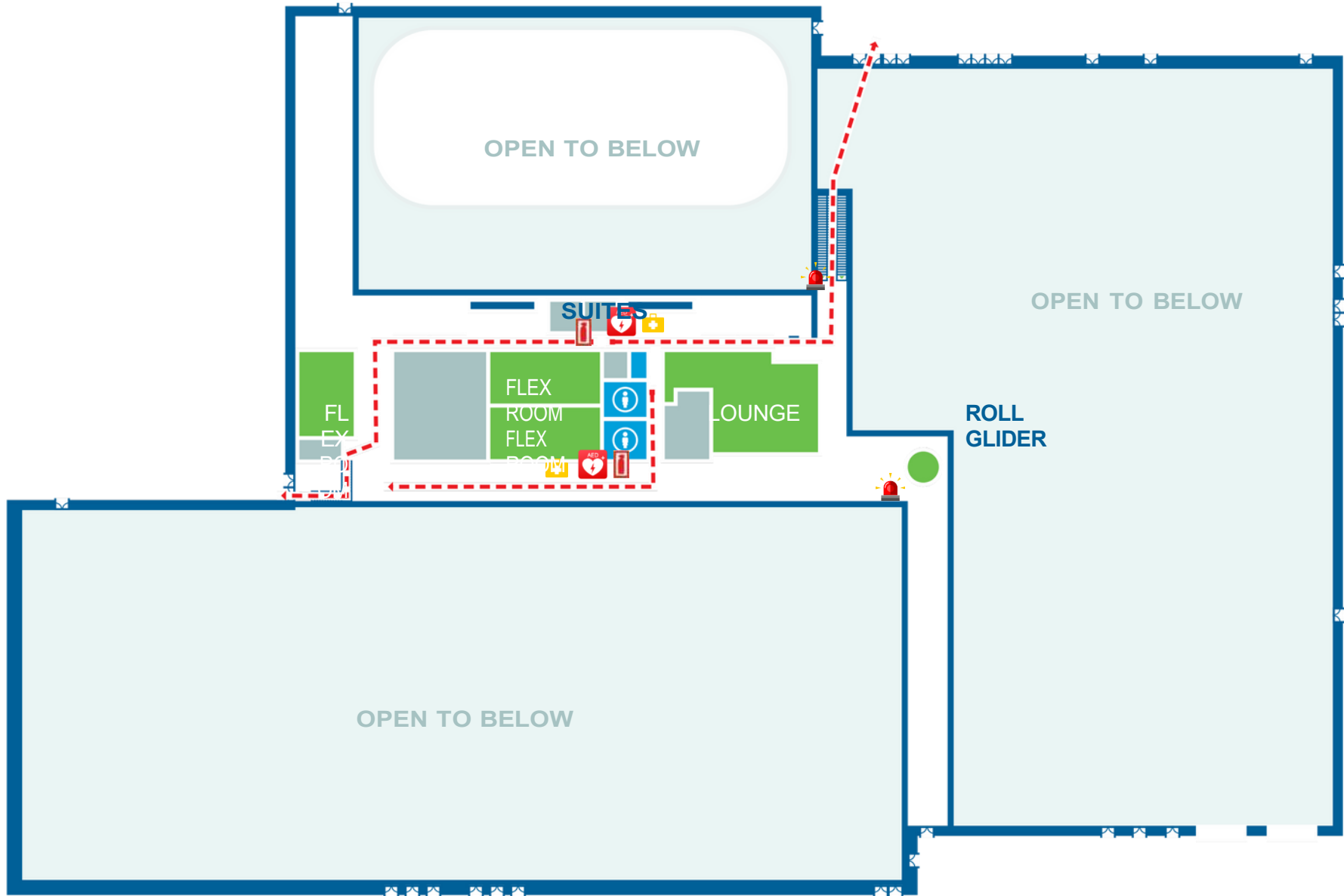
Use the emergency exits and proceed to the designated evacuation assembly area. The area is the Emergency Parking Lot Area at AdventHealth Hospitalhis location is directly south of AdventHealth Sports Park at Bluhawk.

Facility Map: Attached

-  Fire Extinguisher
-  Hot Water Control
-  First Aid
-  AED
-  Fire Alarm
-  Gas Control
-  Tornado Shelter Electric Control
- 

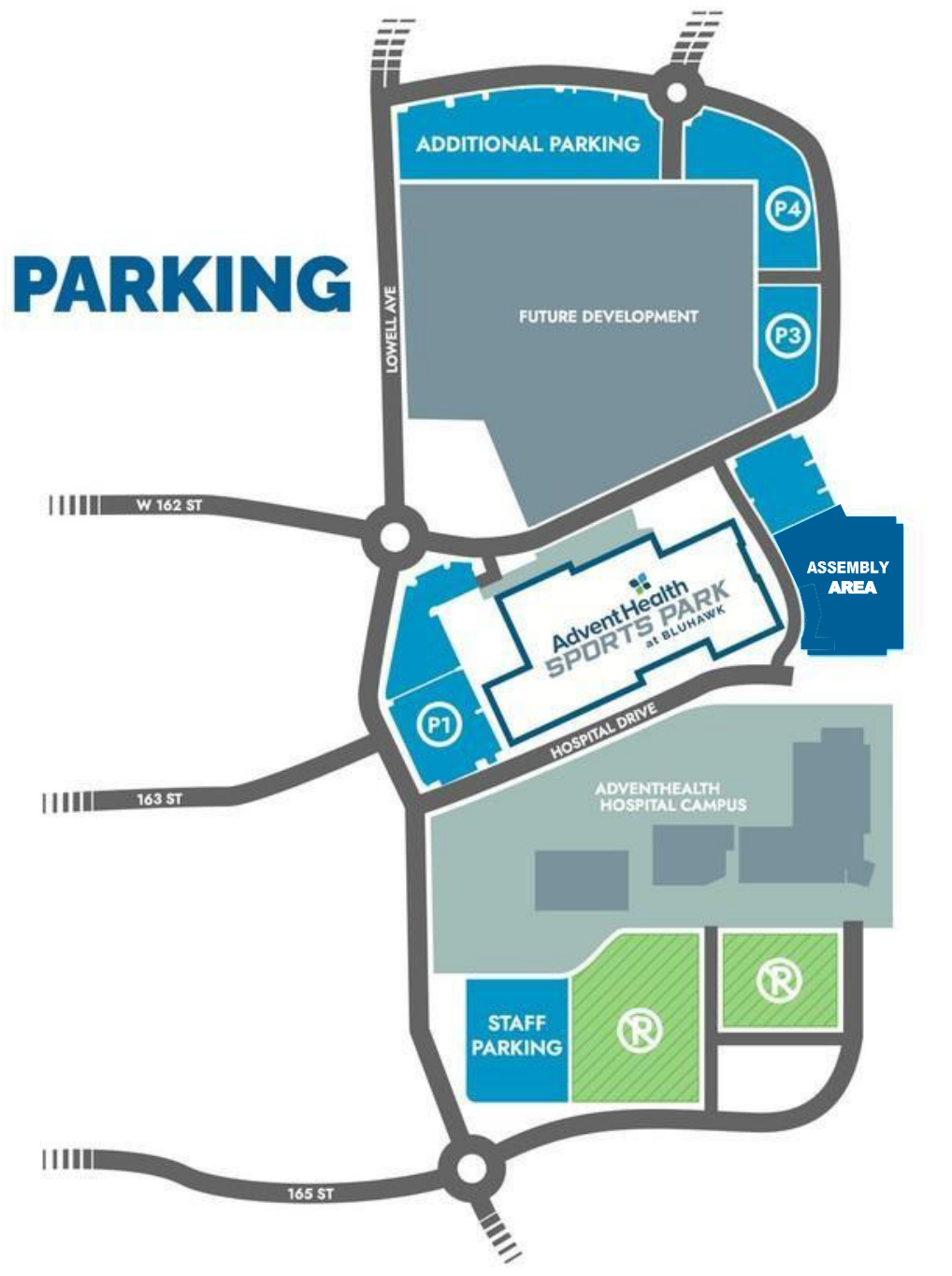


LASE
R
TA



Evacuation Assembly Area
AdventHealth
South Overland Park
Hospital 7820 W.165th
St.
Overland Park, Ks. 66223

Picture Attached:



LOCATIONS OF FIRE ALARMS s FIRE EXTINGUISHERS

Fire alarms and extinguishers are located throughout the building and clearly marked with signs.

Locations of Fire Alarms

- Adjacent to every exterior door in the complex
- Next To Roll Glide
- Lower-Level South Stairs
- Upper Level; Top of North Stairs
- Flex Room 2A.05
- Hockey; Upper level on East Wall / on Mezzanine
- C.26 Room

Locations of Fire Extinguishers

- Front Walkway under North Stairs
- Lower Level; West side Ice Entrance
- Hockey Upper-Level Mezzanine North
- West Hallway
- Flex 2A.05
- Black Hallway to Receiving Dock
- Lower-Level Liquor Room
- Storage Room 2a.29
- Zamboni Room X2
- Receiving Area X5
- C.26 Front Entrance

Location of Automated External Defibrillator

- GNG Colum, North Wall
- Hockey Hall Upper-Level Mezzanine
- Storage Room 21.34
- C.26 Next to Welcome desk
- Field House

REPORTING EMERGENCIES

If an emergency occurs at the facility, the General Manager should be notified immediately. If the General Manager cannot be reached, the Facilities Manager should be contacted.

The AdventHealth Sports Park at Bluhawk means reporting emergencies are Dial 9-1-1 from the receptionist desk or from any cell phone

When reporting an emergency, calmly state:

- Your name
- Provide the address of the emergency
- Telephone Number to reach you if needed
- Nature and size of the emergency
- Business Line: 913-713-4295
- Address: 16201 Shawnee Drive, Overland Park KS., 66223

EVACUATION PROCEDURES

Evacuate to a safe location (Designated Assembly Area) 16201 Shawnee Drive, Overland Park KS., 66223 during an emergency. Be aware of all exits in the building, keep calm, walk quickly to the nearest marked exit.

Call the police for help:

- If it is safe, take cell phones, keys, wallets/purses If it is safe, close office doors
- If it is safe, assist others out of the building
- Direct building occupants to evacuate immediately and meet at the designated evacuation assembly area
- All team members shall also proceed to the Designated Evacuation Area
- **DO NOT Re-ENTER** the building until cleared by first responders
- The facility manager is responsible for ensuring that team members know the evacuation routes from their work site location. After the building is evacuated and team members have gathered at the Emergency Assembly Area roll should be taken.

EVACUATION

Different types of evacuations are utilized depending on the circumstances of the incident. This EAP provides directions to team members on how to respond and where to evacuate during emergencies.

The designated evacuation assembly area for CORE4 is: 16201 Shawnee Drive, Overland Park KS., 66223

EMERGENCY TYPES

- Medical Emergency
- Fire Procedures
- Active Shooter
- Missing Child
- Severe Weather Extended
- Power Loss
- Shelter-In-Place C Lock Down

MEDICAL EMERGENCY

Call the medical emergency number 9-1-1

Provide the following information: Nature of medical emergency

Location of the emergency: 16201 Shawnee Drive, Overland Park Ks.,66223

State your name and the phone number from which you are calling

Do not move the victim unless absolutely necessary.

If trained CPR and First Aid personnel are nearby call them to provide required assistance prior to the arrival of medical help.

If personnel trained in First Aid are not available, attempt to provide the following assistance:
Stop the bleeding with firm pressure on the wounds. (Remember to avoid contact with blood or other bodily fluids)

Clear the air passages using the Heimlich Maneuver in case of choking.

FIRE RESPONSE PROCEDURES

In case of a small fire:

Pull the fire alarm and call 9-1-1 from the front desk phone or from a cell phone Alert people to begin evacuation

Keep an exit available behind you and bring the extinguisher within ten feet of the fire

To use a fire extinguisher, use the acronym PASS:

P Pull the pin

A Aim at the base of the fire

S Squeeze the Handle

S Sweep side to side, at the base of the fire until the fire is out or the extinguisher is empty

In case of a large fire:

- Pull the fire alarm and call 9-1-1 from the front desk phone or from a cell phone Alert people to begin evacuation
- If it is safe to do so, close doors to confine the fire
- Evacuate the building and move to the Designated Evacuation Assembly Area
- Ensure all occupants are accounted for using the team member headcount form and the daily guest check-in list.

Everyone must go to the designated evacuation assembly area and wait for First Responders to clear them before leaving the site.

ACTIVE SHOOTER

RUN: Run, when there is an active threat

HIDE: Hide, if escape is not possible

FIGHT: Fight, only as a last resort, and if your life is in danger

MISSING CHILD

If a child is lost or a parent cannot find them, the MOD will radio a “code Adam”. MOD will provide a description of the child: age, race, outfit, and where they were last seen. Team members should secure all entrances, check restrooms, and scan the entire venue looking for the child. After a thorough check of the entire venue, the MOD or Operations Manager will notify the police. Once the child has been found, the MOD will notify the team members over the radio that the child has been found.

SEVERE WEATHER

TORNADO

When a warning is issued by sirens or other means, seek shelter. Consider the following:

- Small interior rooms on the lowest floor and without windows
- Hallways on the lowest floor away from doors and windows
- Rooms constructed with reinforced concrete, brick, or block with no windows Stay away from outside walls and windows
- Remain sheltered until the tornado threat is over

FLOOD

If Indoors:

Be ready to evacuate as directed by the General Manager / Facilities Manager or designated official. Follow the recommended primary and secondary evacuation routes.

If Outdoors:

Climb to high ground and stay there
Avoid walking or driving through floodwater

EARTHQUAKE

In the event of an earthquake:

- Drop, Cover, and Hold on
- Get under a desk or table. If none are available, move against an interior wall and cover your head with your arms. Remain under cover until the movement subsides.
- Stay away from large windows and shelving
- If it is safe to do so, evacuate the building and proceed to the Designated Evacuation Assembly Area

EXTENDED POWER LOSS

In the event of extended power loss to the facility, certain precautionary measures should be taken:

- Turn off unnecessary electrical equipment and appliances

In freezing temperatures drain the following lines in the event of a long-term power loss:

- Fire sprinkler system, Standpipes, Toilets, etc.

SHELTER-IN-PLACE LOCK DOWN PROCEDURES

A Shelter in Place notification may be issued when the police or another designated official determines that there is a potential threat in the area. When notified to Secure-In-Place, initiate action immediately.

AdventHealth Sports Park at Bluhawk Team members and guests should secure in place and take the following actions:

- Remain calm
- Find an interior room and lock or barricade the doors
- Minimize vulnerability, turn off lights, and silence phones
- Move away from doors and windows
- Do not leave until an all-clear message is received Call 9-1-1 immediately

A team member's priority is to find a safer space to go. Going to a workspace to retrieve personal items is highly discouraged.

Team members should stay inside and behind a locked door until first responders give them directions to do otherwise.

Should the location no longer be safe, team members should try to relocate to a safer location. Once evacuated from the building, account for all staff and guests.

ACCOUNTING FOR BUILDING OCCUPANTS

Supervisors need to maintain an accurate and current list of team members within their department A list should be created of all team members to assist during evacuations and other emergencies.

A guest list should also be created from Sports Key based on the daily check-in report. This document should include:

Present/Accounted for box, which shall be marked when:

- The person is present for the headcount
- The person is definitely known as not being in the affected building

The missing/unaccounted-for box shall be marked when:

- The person is not present for the headcount
- The whereabouts of the person are unknown
- The person is/was known to be in the affected building prior to the evacuation.

