



EMERGENCY ACTION PLAN



General Statement:

The following information will assist team members in the case of an emergency at Rocky Top Sports World. It is important to understand every situation is different and requires attention to detail. Be considerate of variables and make decisions according to policy and directions from local emergency services.

Emergency Contacts and Locations:

Site Name:	Rocky Top Sports World
Site Location:	1870 Sports World Blvd Gatlinburg, TN 37738
General Manager:	Doug Grote: (864) 680-3850
Assistant GM:	Cassidy Trentham: (865) 850-1237
Operations Manager:	Colby Freeman: (252) 886-2197
Facility Direct Line:	(865) 494-1841
Emergency Numbers:	Police Department: 911 Fire Department: 911 EMS: 911
First Aid:	Located on site at the Main Building in the training room AED Locations: 1 in main entrance of gym, 1 in gym at officials entrance, 1 Training room – see map on page 11
Off Site Locations:	<p>Gatlinburg Pittman High School and Jr High 150 Proffitt Road, Gatlinburg, TN 37738</p> <p>Gatlinburg Community Center 156 Proffitt Road, Gatlinburg, TN 37738</p> <p>Pi Beta Phi Elementary School 125 Cherokee Orchard Road, Gatlinburg, TN 37738</p> <p>Pigeon Forge High School 414 Tiger Drive, Pigeon Forge, TN 37863</p> <p>Pittman Center Elementary School 2455 East Pkwy Gatlinburg, TN 37738</p> <p>Sevier County High School 1200 Dolly Parton Lane, Sevierville, TN 37862</p>
On Site Event Medical:	Trainer/EMT: (865) 722-3270
Hospital:	<p>LeConte Medical Center 742 Middle Creek Sevierville, TN 37862</p> <p>Covenant Health Urgent Care 1787 Veterans Blvd Sevierville, TN 37862</p>
ICS	Prepared By: Colby Freeman, Operations Manager, RTSW

Activating EMS System

- Call 911 for an onsite emergency as determined by MOD

Information for Emergency Services

- Name, title, address of the caller – (1870 Sports World Blvd, Gatlinburg, TN)
- Type of Emergency – medical or safety
- Information on the individual in distress: athlete/spectator, age, injury, breathing/not breathing
- If medical, on site event medical team will provide first aid treatment and support
- Directions where incident occurred
- Answer any questions asked by dispatcher

When to call 911:

- Life threatening injury
- Injury that on-site event medical team determines needs transportation
- Aggressive or assaultive behavior
- Threat of a weapon
- Hostage situation
- Fire
- Stuck elevator

After calling 911:

- Notify Event Owner so they are aware an emergency has occurred
- MOD flag down Emergency vehicle and direct them to the right location

Fire Evacuation:

In the event of an emergency evacuation, all guests should go to the nearest exit door. The building should be fully evacuated in the event of an emergency.

If the Fire Alarm is pulled, the Gatlinburg Fire Department will be notified of the emergency. The MOD will still call 911 to explain and direct the fire department to the area affected and provide additional information.

The MOD will account for all staff in the evacuation area in comparison to who has clocked in for the day on the Paylocity App. Once accounted for, the MOD, Fire Department, and Tournament Director will determine the continuation of the event jointly. Safety and wellbeing of staff and guests is top priority.

Venue Lockdown

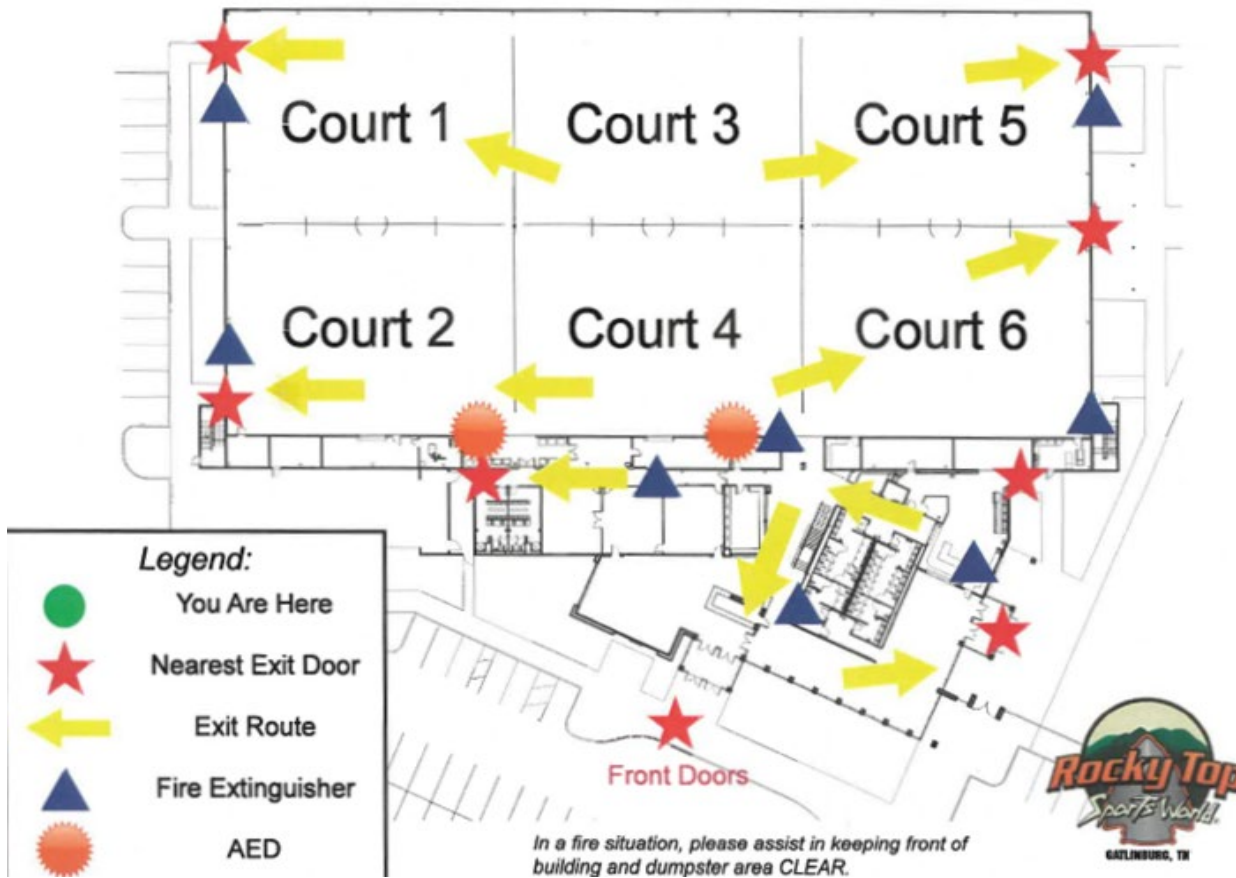
In the case of a lockdown situation, the building will be secured at all entrances/exits in the building and on the fields by the MOD. The goal is to limit people coming into or leaving the facility to retain safety of guests and staff. A lockdown procedure will be implemented if the following incidents occur:

- Gunfire
- Serious threat of gunfire
- Hostage situation
- Local community safety concern

If you are near the person instigating the lockdown situation, do not approach them or play hero. Do not put yourself in danger. Proceed to a safe location, and the MOD will call 911. MOD will notify guests by using the PA system in the gymnasium using a calm and reassuring tone as the emergency personnel arrive. Follow the directions of law enforcement. MOD should notify all F&B staff of the situation and direct them to a secure and

lockable location. All registers will be closed as soon as an emergency arises. All doors should be locked, and people should not be visible to guests. Account for all staff and follow the directions of law enforcement. Run if you can, hide if you must, and fight if there is no other option.

EVACUATION PLAN



Building Power Outage

If the building loses power for any reason, the emergency lights will come on. This will not be enough visibility to continue play so direct guests outside of building. Play will resume as soon as power is restored as determined by MOD and Tournament Director. If there is an outdoor event happening, guests can continue play but will not be able to go inside for restrooms or concessions. They will be directed to portable restrooms. Once power returns, the building will be open.

Lost Child

If a child is lost or a parent cannot find them at Rocky Top Sports World, the MOD will radio a “code Adam”. MOD will provide a description of the child: age, race, outfit, and where they were last seen. Event Staff should secure all entrances, check restrooms, and scan the entire complex looking for the child. After a thorough check of the entire Venue, the MOD or Operations Manager will notify the police. Once the child has been found, the MOD will notify the staff over the radio that the child has been found.

Lightning Safety Policy

Athletic teams that practice and compete outdoors are at risk when the weather is inclement.

GENERAL POLICY: The MOD will monitor weather and make the decision to notify the Tournament Director and Athletic Trainer of any impending weather. Based on alerts from EarthNetworks Lightning Detection System or CODE RED emergency alert system, the MOD will address officials of dangerous situations and determine the suspension of activity in the event of lightning.

- If lightning is detected within a 10-mile radius of the complex by EarthNetworks, an alarm will sound notifying guests of the suspension of play. Play will not resume until 30 minutes have passed without a lightning strike within a 10-mile radius. An all-clear alarm will sound notifying guests of the resumption of play. This is monitored by the MOD.
- To determine the path or duration of a lightning storm, MOD’s can use the WeatherBug App to advise Tournament Directors on the resumption of play.

PRIOR TO COMPETITION: The MOD will discuss with the Tournament Director that there is a system in place to monitor lightning.

ANNOUNCEMENT OF SUSPENSION OF ACTIVITY: Once it is determined that there is danger of a lightning strike, the MOD will subsequently immediately remove all athletes, coaches, and support staff from the playing field or practice area/facility.

EVACUATION OF THE PLAYING FIELD: Immediately following the announcement of suspension of activity all athletes, coaches, officials, and support personnel are to evacuate to the nearest enclosed grounded structure or to a hard top vehicle.

- Field 1-3: Evacuate to The Rock facility or to your vehicle.
- Field 4: Evacuate to your vehicle or The Rock facility.
- Field 5: Evacuate to your vehicle or The Rock facility.
- Field 6-7: Evacuate to the public restrooms or to your vehicle.

EVACUATION OF THE STANDS: During a competition, once the decision to suspend activity has been made, a MOD and RTSW Event Staff will recommend all guests to evacuate and go to shelter.

- I. Fans are advised to immediately seek shelter in the nearest enclosed, grounded shelter

RESUMPTION OF ACTIVITY: During competition activity may resume under the following conditions:

- Thirty minutes AFTER the last lightning strike within a 10-mile radius range on the portable Lightning Detector.
- MOD’s will follow the timer on the EarthNetworks app to determine when it is safe for play to resume. An all-clear alarm will sound.